

# the Fellfarer

JULY 2001

Number 22

## SPECIAL, VERY THIN AND VERY LATE, EDITION !

### ED APOLOGISES!

I APOLOGISE UNRESERVEDLY FOR THE ABSENCE OF <sup>The</sup>FELLFARER IN JULY. UNPRECEDENTED OCCURENCES IN THE OFFICE PREVENTED US FROM MEETING OUR DEADLINE.

It started when I thrashed the office boy (quite rightly, I still believe) for bringing me plain digestives, rather than chocolate digestives, with my morning coffee. The treatment he required necessitated a prolonged spell in the Westmorland General Hospital.

The senior reporters then demanded that another member of staff be appointed to run out to the wine-bar for their hourly gin and snuff, and junior reporting staff required a replacement to sharpen pencils and to bend straightened paper clips back to their original shape.

Members of the typing pool requested that someone be appointed to be the subject of their sexual harassment ("we can't work without our little bit of fun") and the typesetters demanded a new boy to wear a clean shirt each day to wipe their inky fingers on.

Even the cleaners refused to come into the office unless someone was appointed to carry out a 'pre-cleaning scrub and polish'. They claimed that the carpets and desks were a threat to their health and safety. I had no idea the lad was so busy!

I requested my good lady wife to stand in until the boys bones were sufficiently mended and that, of course, resulted in a spell in hospital for me.

When I eventually returned, <sup>The</sup>Fellfarer building had been left empty for several weeks and had been invaded by squatters.

I invited a few of my more muscular 'friends' to help me evict these parasites and the result was a pitched battle which spread into the streets. In the ensuing riot, fire spread from the blazing cars to the building itself and the

(cont. page 3)

## SOCIAL CALENDAR

Preliminary figures suggest that the club has lost almost £3,000.00 because of Foot and Mouth Disease. Please help us to limit the losses this year by supporting the Social Programme, especially the Away Meets at **Wilkin Hill** and **Thorpe Farm**, one of which is, in the opinion of the Social Secretary, "the best hut we've ever booked." I'm not telling you which one though. You'll have to try them both!

All bookings, where required, to Peter Goff on **01524 736990**

## WORKING WEEKEND 14-16th September 2001

CELEBRATE THE RE-OPENING OF HIGH HOUSE BY GETTING DIRTY AND SWEATY! (AND VERY, VERY THIRSTY).

**JOB'S WHICH NEED DOING INCLUDE:**

Pointing of stonework  
Work to soakaway, field drains, bridge and track.  
The Chairmans Wall  
Slating and repair of chimney  
Bunks (?)  
Flooring in the men's end  
Cleaning and much much painting.

## WILKIN HILL MEET 21-23rd September

### 2001

WILKIN HILL OUTDOOR CENTRE

SOUTH YORKSHIRE.

**OS REF: SK 247928**

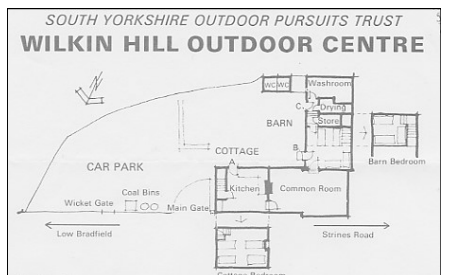
OS sheet: 110 Sheffield & Hud-



dersfield.

The Centre is about 1 mile from the village of Low Bradfield and can accommodate 18 people.

Activities available are: climbing, boating, caving, walking, fishing, horse-riding, field-studies, bird-watching. The brochure also says; The Centre is ideal for groups which want to meet in quietness and improve their relationships and



working practices.

Sounds like us! Let's fill it!

Please book asap

Cost: £5.00 p.p.n.  
(children half price)

## A GUIDED TOUR OF THE MAYORS PARLOUR 25th September 2001

A unique opportunity for Fellfarers. An invitation from the Mayor himself to view the treasures of Kendal Town

Hall, free of charge!  
 Maximum numbers : 25,  
 so book early.  
**Meet at the Town Hall at 7.30 pm.**

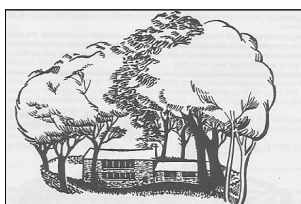


**THORPE FARM  
 MEET  
 19-21st October 2001**

THE OLD STABLES  
 THORPE FARM  
 HATHERSAGE  
 HOPE VALLEY  
 DERBYSHIRE

Thorpe Farm is a family-run dairy/

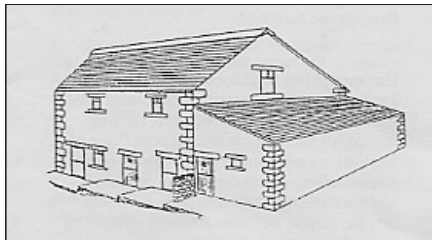
**HIGH HOUSE**



Is  
 booked for Fellfarers  
**5-11th October 2001**

Stanage Edge and 1-2 miles from the historic village of Hathersage, where Little John's grave and various connections with the Brontes can be found.

Hathersage has 6 pubs, several eating places, general stores, banks, post of-



fice, climbing shop, railway station, open air swimming pool and tennis courts.

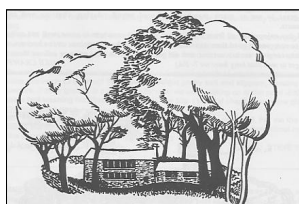
Sheffield is 10 miles away.

6 miles further up the Hope Valley is the village of Castleton with its ancient castle and many caves. 6 miles to the Southwest is the famous plague village of Eyam. Edale, the start of the Penine Way is 8 miles away, giving you access to Kinder Scout.

Please book asap  
 Cost: £5.00 p.p.n.  
 (children half price)

**ARMISTICE MEET  
 At High House  
 9-11th November 2001**

**HIGH HOUSE**



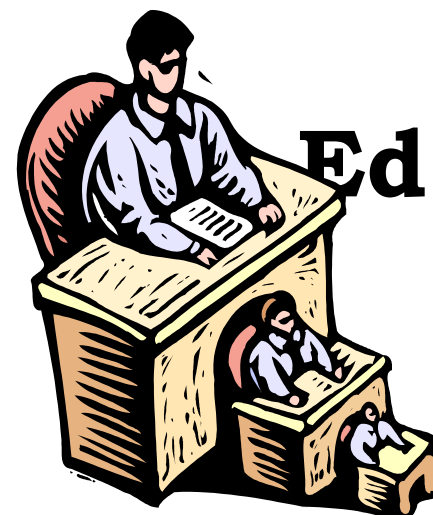
Is  
 booked for Fellfarers  
**22-28th October 2001**



**Next Edition of  
 the Fellfarer:**

There will be a full edition published at the end of September but I desperately need articles, pictures, stories, jokes, photographs, accounts of your summer adventures, gossip about other members, anything which might interest other club members really. Thank you to those who have already supplied material for the next edition and my apologies for the delay, but I need MORE!

**All contributions before  
 22nd. September please.**



mixed farm. It is 2 miles away from